

SOLID PLASTIC (HDPE)

TOILET PARTITIONS

The material of choice for high-traffic areas and high-abuse applications, or where moisture is a consideration.



Global Partitions brings you the best and most cost-effective solid plastic partitions available. Our partitions, available in our classic **Pebble Grained** texture, durable **Tough Texture™ (TT)** and designer **Hammered** finish, start in our plastics extrusion plant, where we form our High Density Polyethylene panels (HDPE) on state-of-the-art fabrication equipment. Total control of the solid sheet production allows us to expedite production of our partitions, providing them in as little as 48 hours. It also allows us to add compounds such as antimicrobial agents or flame retardants as needed. And our most popular colors are available in 100% post-consumer recycled material.

For the floor anchored/overhead braced style, Global Partitions offers the **Easy-Stall Shoe** for a fast and strong installation.

GLOBAL PARTITIONS

SOLID PLASTIC (HDPE)

GLOBAL SOLID PLASTIC (HDPE) PARTITIONS

Solid plastic toilet partitions are the ideal choice for high traffic areas. They are environmentally safe and sanitary, never need painting, and will not easily dent or chip. Plus, with the textured finishes available on the colors listed on page 3, any effect of vandalism is greatly reduced. It is the material of choice for ease of maintenance.

HDPE solid plastic is waterproof and unaffected by high humidity or corrosive environments and since it is solid material it will not delaminate. Most commercial cleaning agents will not damage the surface.

HDPE solid plastic has homogeneous color and material compound throughout. An aluminum heat sink strip is applied as standard to the bottom edge of all doors and panels.

LEED

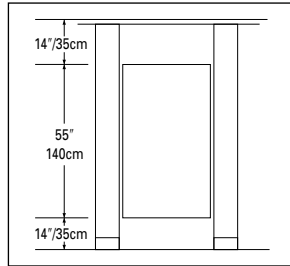
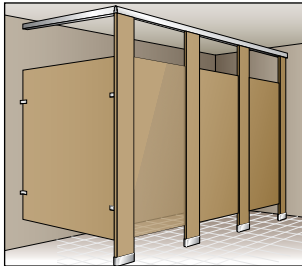
Selecting Global solid plastic partitions can help you obtain LEED credits.

Global Partitions products contribute to LEED certification points as follows:

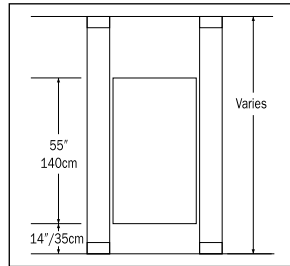
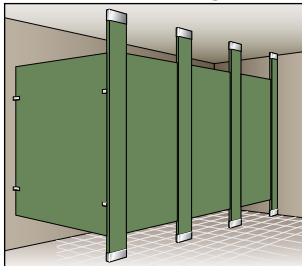
- Recycled Content: MR4.1 and MR4.2
- Low Emitting Materials: EQ 4.4

STYLES AVAILABLE:

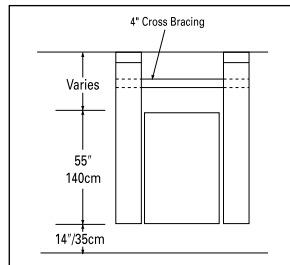
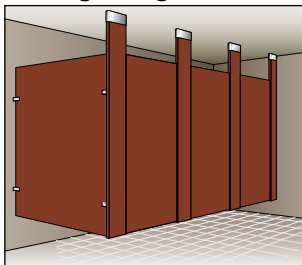
Floor Anchored/Overhead Braced



Floor and Ceiling Anchored



Ceiling Hung



PRIVACY AND URINAL SCREENS

Privacy and Urinal Screens are available in seven, easy to maintain mounting configurations: wall hung, ceiling hung, floor-mounted post, floor-mounted pilaster, floor and ceiling post, floor mounted/overhead braced, and floor and ceiling pilaster.



Wall Hung Screens



Floor Anchored Screens



Post-Mounted Screens

SHOWER DIVIDERS AND DRESSING BOOTHS

Global Partitions' Shower Dividers and Dressing Booths are strong and durable to hold up in public shower areas, resisting penetration by water, steam, mildew, odors and soap. The clean, modern design is attractive as well.

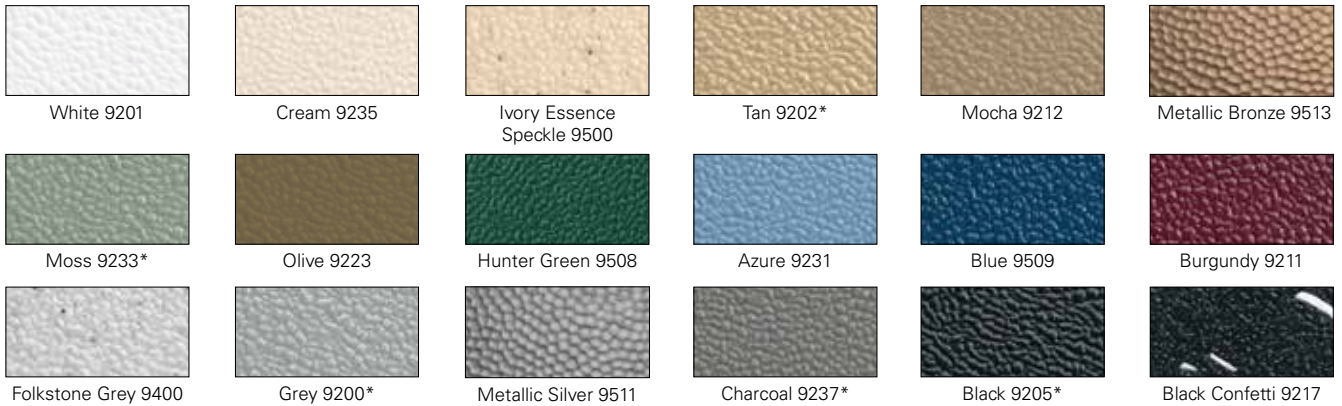


Physically Challenged

Specially designed units are available for the physically challenged, with a wider front entry for easy wheelchair access.

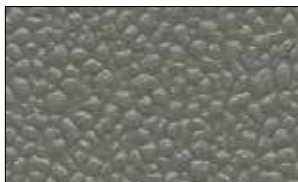
SOLID PLASTIC (HDPE)

COLOR SELECTION:



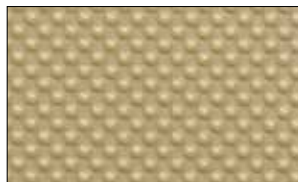
**Available in 100% post-consumer recycled material*

AVAILABLE FINISHES:



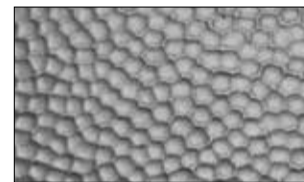
Pebble Grained

Available in all non-metallic colors



Tough Texture™ (TT)

Available in all non-speckled colors with additional lead time

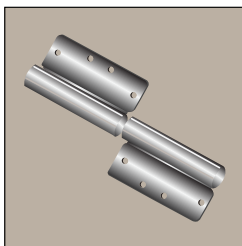


Hammered

Stocked in silver and bronze. Available in all non-speckled colors with additional lead time.

Note: All solid colors are available in all textures with longer lead times and minimum order requirements

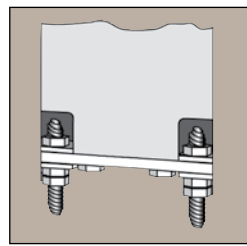
WE'VE GOT THE PRODUCT AND HARDWARE CHOICES TO MATCH ANY APPLICATION



HINGES

- 8" Aluminum
- Vault
- Continuous Stainless Steel
- Integral

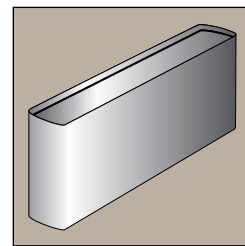
All Available With Lift Emergency Access



FLOOR STUD MOUNTING SYSTEM

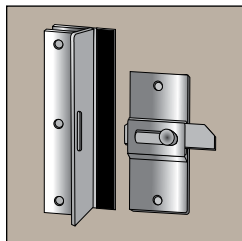
Heavy-duty 5/16" diameter mounting studs adjust height and level pilasters by turning the locknut adjusters.

For use with stainless steel shoe.



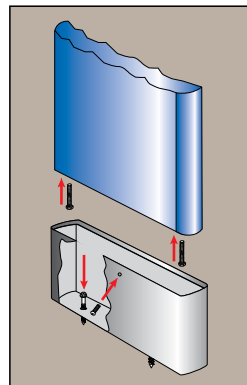
STAINLESS STEEL SHOE

For floor stud mounting system



STRIKE/KEEPERS

- 6"
- Wrap-Around



EASY-STALL SHOE

- For floor anchored overhead braced
- Easily adjusted leveling bolt
- True concrete anchor screws designed for lasting holding power
- Anchor rated at 2770 lbs. pullout strength

For use with Type 304 stainless steel or plastic mounting shoe



PLASTIC MOUNTING SHOE

For Easy-Stall Shoe

Available in:

- Cream 9235
- Blue 9509
- Metallic Silver 9511
- Black 9205

• VANDAL-RESISTANT FASTENERS

• CONTINUOUS BRACKETS

Available in Aluminum, Stainless Steel and Plastic (*same colors as plastic shoe*)

SOLID PLASTIC (HDPE)



Visit us on the web, globalpartitions.com for our complete line of partitions.



Visit Global Partitions' affiliated companies, American Specialties, Inc. and ASI Storage Solutions, at americanspecialties.com and asistorage.com, respectively, for all your washroom and storage needs.



ADA CODE REQUIREMENTS:

Global Partitions has been a pioneer in the design of facilities for the physically challenged. Our engineers stand ready to assist in layout design to meet code or special requirements.

SPECIFICATIONS

If you need complete specifications or additional information, you will find it on our website: globalpartitions.com.

As always, Global Partitions' customer service is ready to assist you with any and all needs!

The color charts shown in this catalog are printed reproductions and are for descriptive purposes only. Color selection cards are available upon request. Global Partitions reserves the right to change specifications and products without notice.



Global Partitions
2171 Liberty Hill Road, Eastanollee, GA 30538
Tel: 706.827.2700 Fax: 706.827.2710
E-mail: sales@globalpartitions.com Web: globalpartitions.com